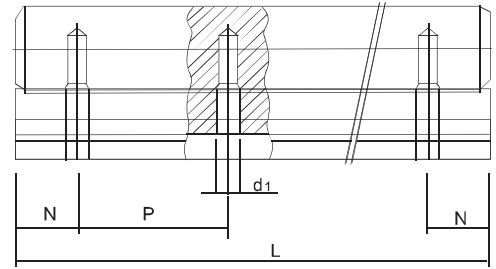
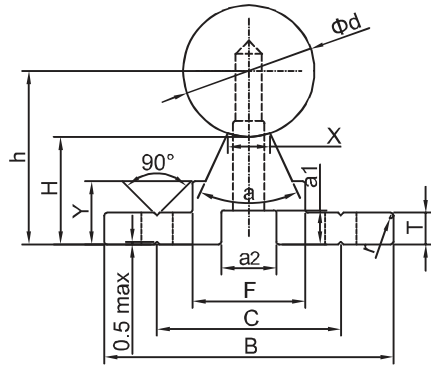


# SBR



◆ SBR

type	shaft diameter	dimensions / mm															P	Kg / m
		E	h	B MAX	H	T ±0.5	F	X	Y	C	θ	S <sub>1</sub>	a <sub>1</sub>	a <sub>2</sub>	d <sub>1</sub>	N		
SBR10	φ10	16	18	32	13	4	13	4.7	8.5	22	80°	4.5	5	9	5	100	100	0.8
SBR12	φ12	17	20.5	34	14.5	4.5	15	6	9.8	25	80°	4.5	5	9	5		100	1.59
SBR13	φ13	17	21	34	14.5	4.5	15	6	9.8	25	80°	4.5	5	9	5		100	1.74
SBR16	φ16	20	25	40	17	5	18.5	8	11.7	30	80°	φ5.5	6	9.5	5.5		150	2.56
SBR20	φ20	22.5	27	45	17	5	19	8	10	30	50°	φ5.5	6.5	11	6.6		150	3.50
SBR25	φ25	27.5	33	55	20.5	6	21.5	8	12	35	50°	φ6.6	6.5	11	6.6		200	5.30
SBR30	φ30	30	37	60	22	7	26.5	10.3	13	40	50°	φ6.6	8.5	14	9		200	7.38
SBR35	φ35	32.5	43	65	25.5	8	28	13	15.5	45	50°	φ9	8.5	14	9		200	9.68
SBR40	φ40	37.5	48	75	28	9	38	16	17	55	50°	φ9	8.5	14	9		200	12.69
SBR50	φ50	47.5	62	95	37	11	45	20	21	70	50°	φ11	12.5	19	11		200	20.46

Shafts:GCr15、HRC58~64

Base: Aluminum alloy